

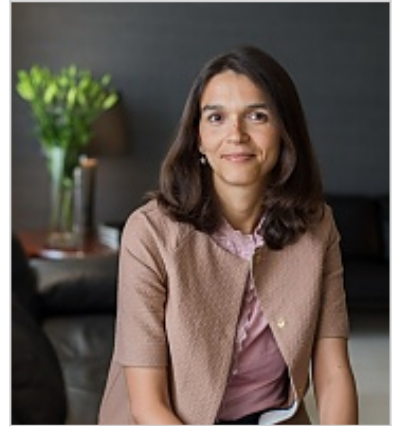
Joana Pinto Monteiro

Consultant

jpm@servulo.com

(+351) 210 933 000

<https://www.servulo.com>



PROFILE

At **SÉRVULO** since 2011, Joana Pinto Monteiro is a consultant in the firm's Real Estate, Tourism and Urban Planning department. She holds a Master's from the Faculty of Law of the University of Lisbon, institution at which she is also a doctoral candidate, and where she has also been a guest lecturer since 2008. She also taught at the Lisbon Military Academy, from 2010 to 2011, and she was a tutor at the Faculty of Law of the University of Lisbon, from 2007 to 2008. She was an associate at the law firm Cuatrecasas, Gonçalves Pereira, from 2006 to 2011. She joined the Bar Association in 2006.

RELEVANT EXPERIENCE

Legal advice to residential/tourism developments, from the planning to the marketing phase.

Assistance in preparing regulatory legislation relating to capital markets/the banking system in Portuguese-speaking African countries.

Legal advice on drafting regulatory legislation on banking law in Portuguese-speaking African countries.

Legal advice to insurance companies and brokers.

EXPERTISE



- Immigration, Relocation and Remote Work
- Insurance
- Luxury
- Private Clients / Wealth Management
- Real Estate and Tourism
- Real Estate, Tourism and Urban Planning

MOST RECENT RECOGNITIONS

Best Lawyers 2025

Planning - TIER Recommended

Real Estate Law - TIER Recommended

Best Lawyers 2024

Planning - TIER Recommended

Real Estate Law - TIER Recommended

Best Lawyers 2023

Real Estate Law - TIER Recommended

Legal 500 2024

Real Estate & Construction - TIER Other key lawyers

Legal 500 2023

Real Estate & Construction - TIER Other Key Lawyers

Nice, friendly, very precise and quick! I recommend Joana Pinto Monteiro.

BOOKS AND ACADEMIC ARTICLES

2022

Propriedade Horizontal

2022 | Gestlegal

2017

Reabilitação Urbana - Um olhar sobre o regime e seus benefícios

2017 | in Ordenamento do Território, Urbanismo e Cidades. Que Rumo?, Vol. II, Coimbra: Edições Almedina, pp. 267-284

2012

O Novo Direito Bancário

2012 | Almedina

As formas de ocupação turística no plano regional de ordenamento do território do Algarve

2012 | in Direito do Urbanismo e do Ordenamento do Território - Estudos, Coimbra, Edições Almedina, pp. 417-438

2011

Regime dos Empreendimentos Turísticos Anotado

2011 | Coimbra Editora